

Steering Committee Meeting

April 27, 2026
2:30-3:30pm ET

Agenda

Time	Topic	Speaker(s)
2:30pm – 2:35pm	Welcome - ACTS Survey Decision	Michael Kurilla, Grace McComsey
2:45pm – 2:55pm	Pod Feedback	Chris Hartshorn
2:55 – 3:10pm	Fall Program Meeting Brainstorming	Amanda Scott
3:10pm – 3:30pm	Pod Spotlight: New Jersey Alliance for Clinical Translational Science	Rey Panettieri

ACTS Team Science Professionals Landscape Assessment

- **Target Audience:**
 - **Phase 1:** Distribution to Enterprise Committees: Collaboration & Engagement and Workforce Development
 - **Phase 2** (dependent on response rates): Hub-Lead PIs/Administrators will be asked to forward the survey to the Team Science Champion, Facilitator, or Leader at their respective institutions
- **Survey Length:** 34 questions; this survey takes approximately 10-15 minutes to complete.
- **Timeline:** Launch April 20, 2026, Close May 4, 2026
- **The purpose** is to find out how Clinical and Translational Science Awards (CTSA Hubs) support Team Science Professionals (TSPs) and related Team Science activities. The survey aims to identify areas where TSPs and being well-supported and to also identify gaps that can be addressed by future efforts of our TSP special interest group (SIG). The long-term goal is to establish Team Science Professional as a valid and recognized profession with clear boundaries and career tracks.
- **Revision History:** NCATS review/approval for Executive Order compliance on February 13, 2026. Review/approval of the final draft of the survey from the February 16, 2026.
- **Primary Lead for the Survey:** Dr. Drew Fox and Dr. Mayla Boguslav

SC Liaisons to WG: Marisa Spann and Sarah Wiehe

Recommendation: Approve for dissemination

Pod Feedback

Presented By: Chris Hartshorn

Pod Leads: Please submit the summaries of your monthly meetings by the 7th of each month for the prior month's meeting to be included in the monthly SC Pod Feedback report.

Pod Feedback Summary: January-April 2026

Time Period Covered: Jan 20-April 3, 2026

Pod Meetings included in review: 11 total

Pod Lead	Hub	Pod Meeting Date
Mimi Kim	Einstein-Montefiore Clinical and Translational Science Award Hub	01/20/26
Karen Wilson	University of Rochester Clinical and Translational Science Institute	02/19/26
Gerry Moeller	Wright Regional Center for Clinical and Translational Science	02/24/26
Steven Bernstein	Dartmouth Clinical and Translational Science Institute	03/02/26
Fasiha Kanwal	Consortium for Translational and Precision Health	03/05/26
Karen Wilson	University of Rochester Clinical and Translational Science Institute	03/10/26
Julie Lumeng	Michigan Institute for Clinical and Health Research	03/19/26
Manisha Desai	Stanford Center for Clinical & Translational Education and Research (Spectrum)	03/20/26
Gerry Moeller	Wright Regional Center for Clinical and Translational Science	03/24/26
Reynold Panettieri	New Jersey Alliance for Clinical Translational Science	03/31/26
Eric Vilain	Institute for Clinical and Translational Science at the University of California-Irvine	04/03/26

Pod Feedback: Major Themes (Jan-April 2026)

Across the 11 pod meeting summaries, Pods consistently describe operating under **increasing oversight, compliance pressure, and uncertainty**, particularly related to NIH/NCATS expectations, funding timelines, and data governance. Pod discussions reflect a shift from aspirational planning toward **risk mitigation, operational clarity, and peer learning**. Meetings are increasingly used to compare models, share strategies, and surface questions requiring consortium-level guidance, signaling a strong desire for **clearer expectations and coordinated approaches** across hubs.

Major Themes

- Rising compliance and oversight expectations (ClinicalTrials.gov, RPPRs, public access, EACs)
- Financial uncertainty and delayed funding timelines affecting planning and stability
- Growing reliance on peer sharing and cross-hub comparison to manage complexity and risk
- Persistent uncertainty around national data infrastructure and governance, especially N3C

Pod Feedback: Emerging Practices (Jan-April 2026)

Centralized compliance approaches

- Integrating ClinicalTrials.gov oversight into IRB or centralized institutional workflows

Streamlined advisory models

- Movement toward lighter, problem-focused EAC formats with concise materials

Peer comparison and shared learning

- Structured cross-hub comparisons of EAC practices and compliance workflows

Earlier coordination

- Proactive engagement with institutional offices, NCATS, and peer hubs to address issues upstream

Pod Feedback: Additional Insights (Jan-April 2026)

Consortium effectiveness

- Discussion of whether CTSA units are functioning as a true consortium and whether more structured, NCATS-supported collaboration could improve impact and shared priority setting

Service vs. scholarship tension

- Discussion of how CTSA units (e.g., BERD, informatics) balance service delivery with scholarly contribution and how institutions should support that balance

AI as an emerging operational focus

- Interest in AI literacy, governance, and responsible implementation, with opportunities for shared training resources

Public policy interface

- Discussion about whether CTSA units should have a defined role in influencing public policy and if it should be a measure of success, and possible engagement with institutional Government Relations as a potential pathway for that role.

Pod Questions for SC and NCATS: Jan-Apr 2026

CTSA Role in Public Policy

- Should CTSA have a formal role in influencing public policy, and should that role be measured or supported by the consortium?

AI Governance and Training

- How should the consortium support AI governance and training consistently across hubs?
 - Should this be consistent across Hubs or left to local control?
 - Are there specific aspects of either that could be consortium-wide practices vs localized only?
 - What are the highest-risk areas (e.g., bias, data privacy, model drift) that governance must explicitly address – thus would be of value to implement Consortium-wide?
 - How should CTSA approach alignment with IRBs and regulatory bodies for AI-enabled studies?

2026 Fall Annual Program Meeting

Presented by: Amanda Scott

2026 Fall Annual Program Meeting Details

Status: Pending
NIH approval

Target Dates:
September 23-25

**Steering
Committee to meet
September 22*

Co-Chairs: Mike
Kurilla, Steven
Bernstein

Features:

- **New!** EC Day plenary
- **In-person only:** No virtual component

Process:

- Solicit [topic ideas](#) from Steering Committee & U Pis
- Get Volunteers for Fall Planning Committee (FPC)
 - SC Members
 - T&K representatives
 - Hub Admin representative
 - NCATS Program Officers
- FPC planning starts (target late May 2026)



**Steering Committee Meeting
POD Lights: Element E,
Challenges and Solutions**

Reynold A. Panettieri, Jr., M.D.

**New Jersey Alliance for Clinical and Translational Science
Rutgers University**

Our Pod



MASONIC INSTITUTE FOR THE DEVELOPING BRAIN
UNIVERSITY OF MINNESOTA
Driven to Discover®

CLINICAL AND TRANSLATIONAL SCIENCE INSTITUTE
UNIVERSITY OF MINNESOTA
Driven to Discover®



INDIANA
CTSI Clinical and Translational Sciences Institute



Institute for Clinical and Translational Research
University of Wisconsin-Madison

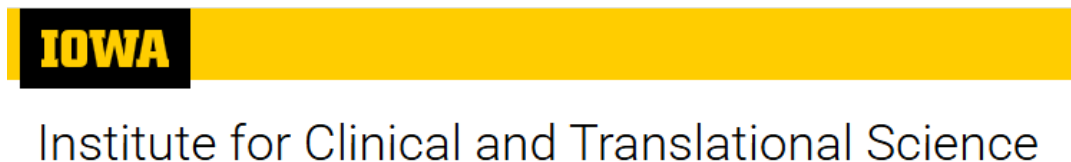


UFHealth
UNIVERSITY OF FLORIDA HEALTH



NJacts

R Rutgers Institute for Translational Medicine & Science



IOWA

Institute for Clinical and Translational Science

Element E: A Challenge

- Element E is intended to be inward-facing.
- Within this FOA, the module is new with no legacy examples.
- Are successful projects scalable?
- Can Element E projects become a conduit for CTS discovery, implementable consortium-wide (outward-facing)?

Our Pod sought to share Element E projects and processes to gain insight and pursue collaborations.

Several Unidimensional and derived measures have been identified for many use cases



MASONIC INSTITUTE FOR
THE DEVELOPING BRAIN

UNIVERSITY OF MINNESOTA
Driven to Discover®

CLINICAL AND TRANSLATIONAL
SCIENCE INSTITUTE

UNIVERSITY OF MINNESOTA
Driven to Discover®



Healthy Communities Data Portal

Data, tools, and partnerships to support community-centered research and action

Mapping a Healthier Future: The Healthy Communities Data Portal


The Portal's Foundation

A National Geodatabase for Health Equity

Integrates quantifiable environmental variables with clinical data to support research and policy.

 **364+**
Diverse Datasets
Available

 **Socioeconomic
Status
(174)**

 **Housing and
Transportation
(61)**

 **Ethnicity/Race
(50)**

Environmental Context for Clinical Data

Surfacing how neighborhood factors directly relate to brain health and development.

Real-World Applications

Closing the Telehealth Supply Gap

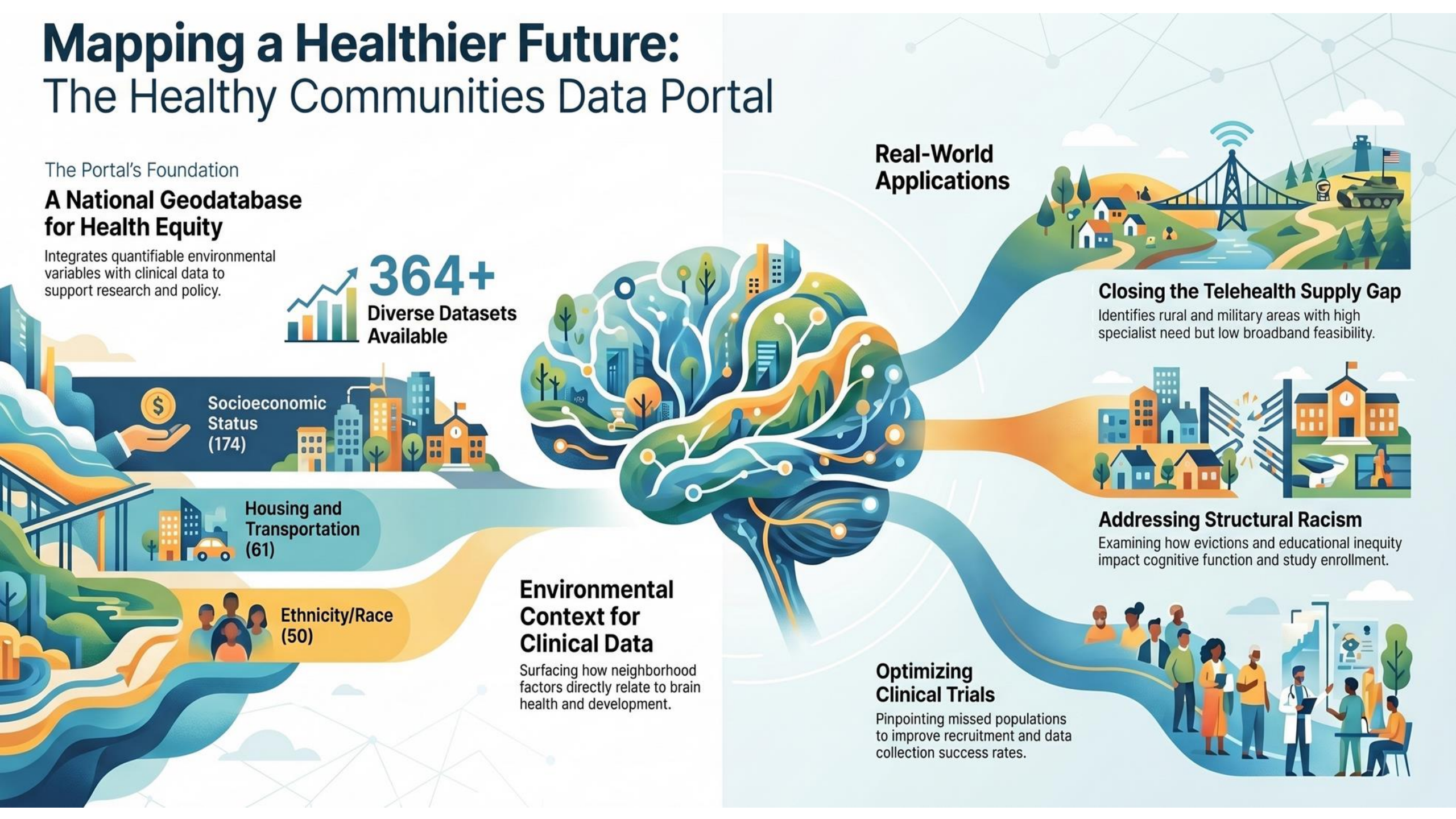
Identifies rural and military areas with high specialist need but low broadband feasibility.

Addressing Structural Racism

Examining how evictions and educational inequity impact cognitive function and study enrollment.

Optimizing Clinical Trials

Pinpointing missed populations to improve recruitment and data collection success rates.





Novel Genetic Services Model to Enhance Patient Care

Gary A. Heman, Ph.D.
Vice Chair and Undergraduate Director
Professor, Department of Genetics
Rutgers University

Solving the Genetics Wait-Time Crisis: A Novel Service Model

The Access Gap



1 Specialist per 300,000 People

The U.S. faces a critical shortage of genetics professionals relative to the population.



Rising Wait Times

Non-emergency patients increasingly face wait times exceeding 3 to 8 months for appointments.

Traditional vs. Novel Model

Traditional: MD + GC Led



Joint Appointment



Patients wait 2-6 months for a joint appointment with a physician and counselor.

Novel: GC-First Intake



GC Intake & Testing



Patients see a Genetic Counselor within 30 days for history and testing. MD geneticists review and co-sign all GC notes and test orders remotely.



Physician Oversight

Impact and Results



Traditional

99 Days

Novel Model

27.6 Days

664 Patients

2024
(Traditional)

933 Patients

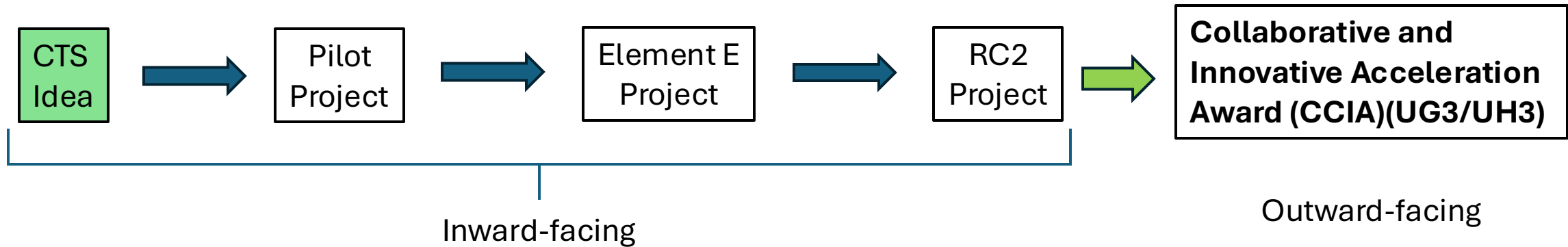
2025
(Novel Extrapolated)

**40.5%
More Patients Seen**

Capacity increased significantly without requiring additional MD geneticist hours.

An Element E Conceptual Model and Opportunity

A conduit for CTS Discovery



- Resourced to generate preliminary data
- De-risks failure
- Amplifies the likelihood for impact locally and nationally

Next Meeting: May 11, 2026

Agenda

- K & T Consortium Group Charter Review
- WG Report Outs: Pediatric Clinical Trials, Overcoming Barriers in Women's Health Research

There will be no meeting on 5/25 in observance of Memorial Day

**If you are unable to attend a meeting, please inform us at steeringcmte@ccos.ctsa.io. Slides and summaries will be made available post-meeting. Substitutions are not permitted for Steering Committee meetings.*

